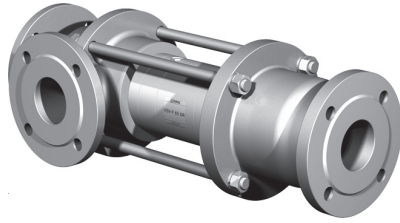


coaxial valve

type VSV-F 65 DR

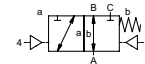
5-VSV-F 65 DR

valve type with pilot valve



3/2 way valve externally controlled
pressure range PN 0-40 bar
orifice DN 65 mm
connection flange
function valve normally closed (A ► B)
 symbol **NC**

valve normally open (A ► B)
 symbol **NO**



△ Above stated body materials refer to the valve port connections that get in contact with the media only!

design pressure balanced, with spring return, intersecting switch-over
body materials ① aluminium ② steel, galvanized
 ③ ⑤ without non-ferr. metals
 ④ steel, nickel plated ⑥ stainless steel

valve seat synthetic resin on metal
seal materials NBR PTFE, FPM, CR, EPDM

details needed for main valve

- orifice
- port
- function NC/NO
- operating pressure
- inlet pressure at A, B or C
- flow rate
- media
- media temperature
- ambient temperature
- type of actuation

details needed for pneumatic actuation

- nominal voltage
- type of protection
- actuation pressure range min/max
- low wattage coil, actuation pressure range 4-7 bar
- pilot valve type

details needed for hydraulic actuation

- actuation pressure range min/max
- hydraulic control valve function

⚠ The valves' technical design is based on media and application requirements. This can lead to deviations from the general specifications shown on the data sheet with regards to the design, sealing materials and characteristics.

⚠ If order or application specifications are incomplete or imprecise there exists a risk of an incorrect technical design of the valve for the required application. As a consequence, the physical and / or chemical properties of the materials or seals used, may not be suitable for the intended application.

■ specifications not highlighted are standard
 ■ specifications highlighted in grey are optional

| general specifications | | options |
|------------------------|--|---|
| ports | VSV-F flanges PN 16/40 | special flanges |
| function | NC | NO |
| pressure range | bar 0-16/0-40 A ⇒ B max.40 / B ⇒ A max.16 / A ⇒ C max.40 / C ⇒ A max.40 | > 40 bar upon request |
| Kv value | m ³ /h 68,0 | |
| vacuum | leak rate | < 10 ⁻⁶ mbar·l/s ⁻¹ |
| pressure-vacuum | P ₁ ⇔ P ₂ | pressure side max. 40 bar vacuum side leak rate upon request |
| back pressure | P ₂ > P ₁ see pressure range | |
| media | gaseous - liquid - highly viscous - gelatinous - pasty - contaminated | |
| abrasive media | | version available |
| damping | opening by throttles on pilot valve closing see pressure range | |
| flow direction | see pressure range | |
| switching cycles | 1/min 50 | |
| switching time | ms opening 200-3000 closing 200-3000 | |
| media temperature | °C direct mounted pilot valve 60 | remote mounted pilot valve outside temperature range of media max.160°C |
| ambient temperature | °C direct mounted pilot valve 50 | |
| flush ports | | available |
| leak ports | | available |
| limit switches | | inductive/mechanical upon request |
| manual override | via pilot valve | |
| approvals | | LR/GL/WAZ |
| mounting | | |
| weight | kg VSV-F 24,0 | |
| additional equipment | | upon request |

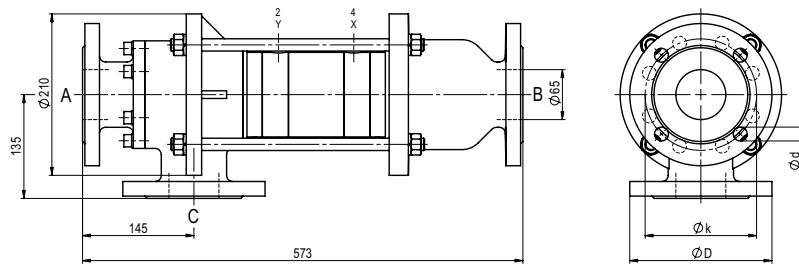
| electrical specifications | | options |
|---------------------------|--|--|
| nominal voltage | U _n DC 24V U _n AC 230V 50 Hz | special voltage upon request |
| power consumption | DC 4,8 W AC pick up 11,0 VA holding 8,5 VA | special voltage upon request |
| protection | IP 65 (P54) acc. DIN 40 050 | |
| energized duty rating | ED 100% | |
| connection | plug acc. DIN EN 175301-803 form B, 4 positions x 90° / wire diameter 6-8 mm | |
| additional equipment | illuminated plug with varistor | connector acc. VDMA |
| optional | M12x1 connector acc. DESINA | |
| max. temperature | media 60°C ambient 50°C | |
| explosion proof | EEx m II T5 nominal voltage U _n power consumption | direct current 24 V 3,25 W alternating current 230 V 50 Hz 2,90 W |

| pneumatic specifications | | options |
|--------------------------|---|---------|
| actuation pressure range | bar 4-10 | |
| air consumption | cm ³ /stroke 50 | |
| cycle speed | main valve speed variable by throttles on pilot valve | |
| control | preferably 5/2-way pilot valve | |
| actuator ports | 2/4 G 1/4 | G 3/8 |

| hydraulic specifications | | options |
|--------------------------|----------------------------------|--------------|
| actuation pressure range | bar 10-30 / 30-60 | upon request |
| by media | | |
| control | preferably 4/2-way control valve | |
| actuator ports | X/Y G 1/4 | NPT 1/4 |

type VSV-F 65 DR

function: **NC**
closed when not energized (A ► B)

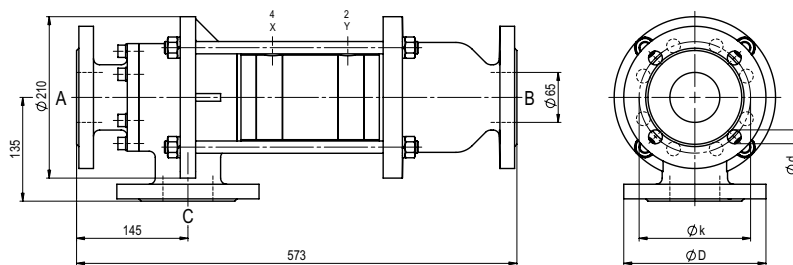


PN 16 - 4 bolt holes
PN 40 - 8 bolt holes

| flanges PN | DIN | øD | øk | ød |
|------------|------|-----|-----|----|
| 16 | 2633 | 185 | 145 | 18 |
| 40 | 2635 | 185 | 145 | 18 |

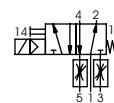
type VSV-F 65 DR

function: **NO**
open when not energized (A ► B)

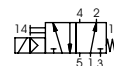


PN 16 - 4 bolt holes
PN 40 - 8 bolt holes

pneumatic actuation (separately)



5/2-way-pilot valve
flow rate 700 l/min
pressure range 3-10 bar G 1/8



5/2-way-pilot valve ISO 1
flow rate 700 l/min
pressure range 3-10 bar G 1/4