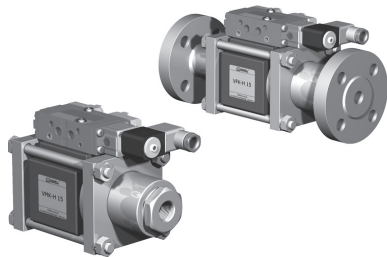


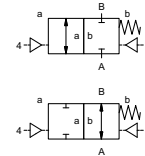
5-VMK-H 15
5-VFK-H 15

valve type with pilot valve

coaxial valve
type **VMK-H 15**
VFK-H 15



2/2 way valve externally controlled
pressure range PN 0-200 bar
orifice DN 15 mm
connection thread/flange
function valve normally closed symbol **NC**
valve normally open symbol **NO**



△ Above stated body materials refer to the valve port connections that get in contact with the media only!

design pressure balanced, with spring return
body materials ① ② steel, galvanized
③ ⑤ without non-ferr. metals
④ steel, nickel plated ⑥ stainless steel
valve seat synthetic resin on metal
seal materials NBR PTFE, FPM, CR, EPDM

details needed for main valve

- orifice
- port
- function NC/NO
- operating pressure
- flow rate
- media
- media temperature
- ambient temperature
- type of actuation

details needed for pneumatic actuation

- nominal voltage
- type of protection
- actuation pressure range min/max
- low wattage coil, actuation pressure range 4-7 bar
- pilot valve type

details needed for hydraulic actuation

- actuation pressure range min/max
- hydraulic control valve function

		general specifications	options
ports	VMK-H threads G 1/2 VFK-H flanges PN 160/250		special threads special flanges
function	NC		NO
pressure range	bar 0-200		
Kv value	m ³ /h 5,6		
vacuum	leak rate		< 10 ⁻⁶ mbar·l·s ⁻¹
pressure-vacuum	P ₁ ⇔ P ₂		pressure side max. 200 bar vacuum side leak rate upon request
back pressure	P ₂ > P ₁		available (max. 16 bar)
media		gaseous - liquid - highly viscous - gelatinous - pasty - contaminated	
abrasive media			version available
damping	opening closing by throttles on pilot valve		
flow direction	A ⇔ B as marked		bi-directional upon request
switching cycles	1/min 200		
switching time	ms opening 50-3000 closing 50-3000		
media temperature	°C direct mounted pilot valve 60		remote mounted pilot valve outside temper-
ambient temperature	°C direct mounted pilot valve 50		ature range of media max. 160°C
flush ports			available
leak ports			available
limit switches			inductive/mechanical upon request
manual override	via pilot valve		
approvals			LR/GL/WAZ
mounting			mounting brackets
weight	kg VMK-H 5,3 VFK-H 7,1		
additional equipment			upon request

electrical specifications

		options
nominal voltage	U _n DC 24V U _n AC 230V 50 Hz	special voltage upon request special voltage upon request
power consumption	DC 4,8 W AC pick up 11,0 VA holding 8,5 VA	2,5 W
protection	IP 65 (P54) acc. DIN 40 050	
energized duty rating	ED 100%	
connection	plug acc. DIN EN 175301-803 form B, 4 positions x 90° / wire diameter 6-8 mm	
additional equipment	illuminated plug with varistor	
optional	M12x1 connector acc. DESINA	connector acc. VDMA
max. temperature	media 60°C ambient 50°C	
explosion proof	EEx m II T5 nominal voltage U _n power consumption	direct current 24 V 3,25 W alternating current 230 V 50 Hz 2,90 W

pneumatic specifications

		options
actuation pressure range	bar 4-10	
air consumption	cm ³ /stroke 11	
cycle speed	main valve speed variable by throttles on pilot valve	
control	preferably 5/2-way pilot valve	
pilot valve interface	co-ax / NAMUR	ISO 1
actuator ports	2/4 G 1/8	G 1/4

hydraulic specifications

		options
actuation pressure range	bar 10-30 / 30-60	
control	preferably 4/2-way control valve	
actuator ports	X/Y G 1/4	NPT 1/4

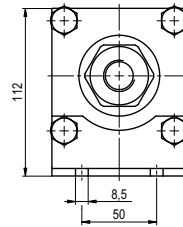
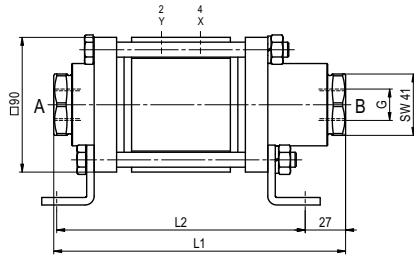
⚠ The valves' technical design is based on media and application requirements. This can lead to deviations from the general specifications shown on the data sheet with regards to the design, sealing materials and characteristics.

⚠ If order or application specifications are incomplete or imprecise there exists a risk of an incorrect technical design of the valve for the required application. As a consequence, the physical and / or chemical properties of the materials or seals used, may not be suitable for the intended application.

■ specifications not highlighted are standard
■ specifications highlighted in grey are optional

type VMK-H 15

function: **NC**
closed when not energized

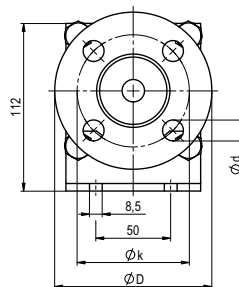
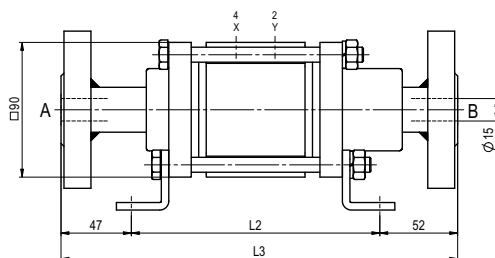


constructive length	L1	L2	L3
standard	195	166	265
with 1/2 inductive limit switches	225	196	295
with force-feed lubrication nipple	225	196	295
with mechanical limit switches	225	196	295

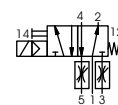
flanges PN	DIN	ϕD	ϕk	ϕd
160	2638	105	75	14
250	2628	130	90	18

type VFK-H 15

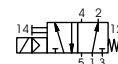
function: **NO**
open when not energized



pneumatic actuation



5/2-way-pilot valve
flow rate 700 l/min
pressure range 3-10 bar G 1/8



5/2-way-pilot valve ISO 1
flow rate 700 l/min
pressure range 3-10 bar G 1/4