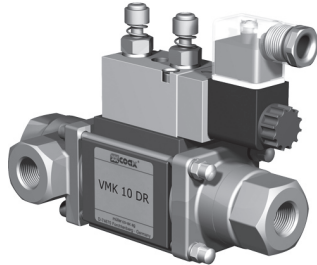


coaxial valve

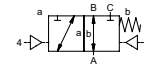
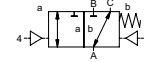
type VMK 10 DR

5-VMK 10 DR

valve type with pilot valve



3/2 way valve externally controlled
pressure range PN 0-64 bar
orifice DN 10 mm
connection thread
function valve normally closed (A ► B) symbol **NC**
 valve normally open (A ► B) symbol **NO**



△ Above stated body materials refer to the valve port connections that get in contact with the media only!

design pressure balanced, with spring return, intersecting switch-over
body materials ① brass ②
 ③ brass, nickel plated ⑤
 ④ ⑥ stainless steel

valve seat synthetic resin on metal
seal materials NBR PTFE, FPM, CR, EPDM

details needed for main valve

- orifice
- port
- function NC/NO
- operating pressure
- inlet pressure at A, B or C
- flow rate
- media
- media temperature
- ambient temperature
- type of actuation

details needed for pneumatic actuation

- nominal voltage
- type of protection
- actuation pressure range min/max
- low wattage coil, actuation pressure range 4-7 bar
- pilot valve type

details needed for hydraulic actuation

- actuation pressure range min/max
- hydraulic control valve function

⚠ The valves' technical design is based on media and application requirements. This can lead to deviations from the general specifications shown on the data sheet with regards to the design, sealing materials and characteristics.

⚠ If order or application specifications are incomplete or imprecise there exists a risk of an incorrect technical design of the valve for the required application. As a consequence, the physical and / or chemical properties of the materials or seals used, may not be suitable for the intended application.

■ specifications not highlighted are standard
 ■ specifications highlighted in grey are optional

general specifications

ports	VMK	threads G 1/4 - G 3/4	options	special threads
function		NC		NO
pressure range	bar	0-16/0-40/0-64 A ⇒ B max.64 / B ⇒ A max.16 / A ⇒ C max.64 / C ⇒ A max.64		
Kv value	m ³ /h	2,5		
vacuum				< 10 ⁻⁶ mbar*1s ⁻¹
pressure-vacuum	P ₁ ⇔ P ₂			pressure side max. 64 bar vacuum side leak rate upon request
back pressure	P ₂ > P ₁	see pressure range		
media		gaseous - liquid - highly viscous - gelatinous - pasty - contaminated		
abrasive media				upon request
damping	opening			
	closing	by throttles on pilot valve		
flow direction		see pressure range		
switching cycles	1/min	680		
switching time	ms	opening 30-3000 closing 50-3000		
media temperature	°C	direct mounted pilot valve 60		remote mounted pilot valve outside temperature range of media max.160°C
ambient temperature	°C	direct mounted pilot valve 50		
flush ports				
leak ports				
limit switches				inductive
manual override		via pilot valve		
approvals				LR/GL/WAZ
mounting				mounting brackets
weight	kg	VMK 1,8		
additional equipment				upon request

electrical specifications

nominal voltage	U _n	DC 24V	options	special voltage upon request
	U _n	AC 230V 50 Hz		special voltage upon request
power consumption	DC	4,8 W		2,5 W
	AC	pick up 11,0 VA holding 8,5 VA		
protection	IP 65 (P54)	acc. DIN 40 050		
energized duty rating	ED	100%		
connection		plug acc. DIN EN 175301-803 form B, 4 positions x 90° / wire diameter 6-8 mm		
additional equipment		illuminated plug with varistor		
optional	M12x1	connector acc. DESINA		connector acc. VDMA
max. temperature	media	60°C		
	ambient	50°C		
explosion proof	EEx m II T5	nominal voltage U _n		direct current 24 V 3,25 W
		power consumption		alternating current 230 V 50 Hz 2,90 W

pneumatic specifications

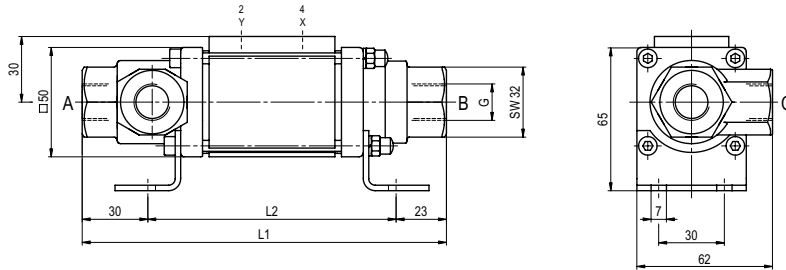
actuation pressure range	bar	4-10	options	
air consumption	cm ³ /stroke	7		
cycle speed		main valve speed variable by throttles on pilot valve		
control		preferably 5/2-way pilot valve		
pilot valve interface		standard / NAMUR		
actuator ports	2/4	G 1/8		

hydraulic specifications

actuation pressure range	bar	4-10	options	
control		preferably 4/2-way control valve		
actuator ports	X/Y	G 1/8		

type VMK 10 DR

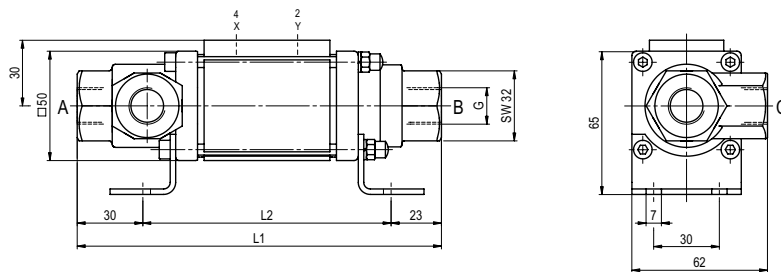
function: **NC**
closed when not energized (A ► B)



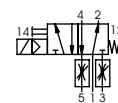
constructive length	L1	L2
standard	166,5	113,5
with 1/2 inductive limit switches	186,5	133,5

type VMK 10 DR

function: **NO**
open when not energized (A ► B)



pneumatic actuation (separately)



5/2-way-pilot valve
flow rate 350 l/min
pressure range 3-10 bar G 1/8