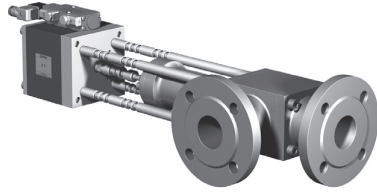


lateral valve

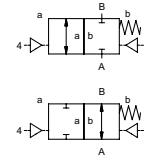
type V2

5-V2

valve type with pilot valve



2/2 way valve externally controlled
pressure range PN 0-64 bar
orifice DN 15 - DN 80
connection flange
function valve normally closed symbol **NC**
 valve normally open symbol **NO**



design pressure balanced, with spring return
body materials ① ② ③ ⑤ ④ steel, nickel plated ⑥ stainless steel
valve seat synthetic resin on metal / metal on metal
seal materials FPM, graphite

details needed for main valve

- orifice
- port
- function NC/NO
- operating pressure
- flow rate
- media
- media temperature
- ambient temperature
- type of actuation

details needed for pneumatic actuation

- nominal voltage
- type of protection
- actuation pressure range min/max
- low wattage coil, actuation pressure range 4-7 bar
- pilot valve type

⚠ The valves' technical design is based on media and application requirements. This can lead to deviations from the general specifications shown on the data sheet with regards to the design, sealing materials and characteristics.

⚠ If order or application specifications are incomplete or imprecise there exists a risk of an incorrect technical design of the valve for the required application. As a consequence, the physical and / or chemical properties of the materials or seals used, may not be suitable for the intended application.

■ specifications not highlighted are standard
 ■ specifications highlighted in grey are optional

	general specifications	options
ports	V2 flanges PN 16/40/64	special flanges
function	NC	NO (to DN50)
pressure range	bar 0-64 (Δp max. 30 bar)	
Kv value	m ³ /h DN15=7,5m ³ /h DN25=15m ³ /h DN40=36m ³ /h DN50= 46m ³ /h DN80= 200m ³ /h	
vacuum	leak rate < 10 ⁻⁴ mbar·l/s ⁻¹	
pressure-vacuum	P ₁ ↔ P ₂	pressure side max. 40 bar vacuum side leak rate upon request
back pressure	P ₂ > P ₁	upon request
media	gaseous	
abrasive media		version available
damping	opening by throttles on pilot valve	
flow direction	A ↔ B as marked	
switching cycles	1/min upon request	
switching time	ms 60 to DN50 100 DN65-80	
media temperature	°C 400 DN15-50 >300 DN65-80	
ambient temperature	°C direct mounted pilot valve 50	
flush ports		
leak ports		
limit switches		inductive/mechanical
manual override	via pilot valve	
approvals		LR/GL/WAZ
mounting		
weight	kg 23,0 to DN50 130,0 DN65-80	
additional equipment		upon request

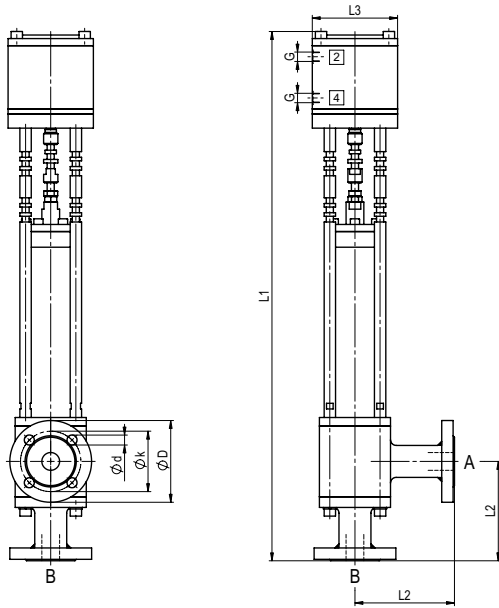
	electrical specifications	options
nominal voltage	U _n DC 24V AC 230V 50 Hz	special voltage upon request
power consumption	DC 4,8 W AC pick up 11,0 VA holding 8,5 VA	special voltage upon request 2,5 W
protection	IP 65 (P54) acc. DIN 40 050	
energized duty rating	ED 100%	
connection	plug acc. DIN EN 175301-803 form B, 4 positions x 90° / wire diameter 6-8 mm	
additional equipment	illuminated plug with varistor	connector acc. VDMA
optional	M12x1 connector acc. DESINA	
max. temperature	media 60°C ambient 50°C	
explosion proof	EEx m II T5 nominal voltage U _n power consumption	direct current 24 V 3,25 W alternating current 230 V 50 Hz 2,90 W

	pneumatic specifications	options
actuation pressure range	bar 6-10	
air consumption	cm ³ /stroke 50	
cycle speed	main valve speed variable by throttles on pilot valve	
control	preferably 5/2-way pilot valve	
actuator ports	2/4 G 1/4 DN15-50 G 1/2 DN65-80	

	hydraulic specifications	options
actuation pressure range		
by media		
control		
actuator ports		

type V 2

function: **NC**
closed when not energized



constructive length	L1	L2	L3	G
DN 15-50	750	140	□120	1/4
DN 65-80	1036	200	Ø270	1/2

flanges PN	DN	DIN	ϕD	ϕk	ϕd
16/40	15	2633/2635	95	65	14
16/40	25	2633/2635	115	85	14
16/40	40	2633/2635	150	110	18
16/40	50	2633/2635	165	125	18
16/40	65	2633/2635	185	145	18
16/40	80	2633/2635	200	160	18
64	15	2637	105	75	14
64	25	2637	140	100	18
64	40	2637	170	125	22
64	50	2637	195	145	26
64	65	2637	220	170	26
64	80	2637	230	180	26

type V 2

function: **NO**
open when not energized

