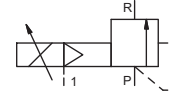


pressure limitation valve

type **SPB 08**



control valve proportional
pressure range PN 0-200 bar
orifice DN 8 mm
connection thread
function stepless pressure regulation bypass version



△ Above stated body materials refer to the valve port connections that get in contact with the media only!

design externally controlled without spring return
body materials ② steel, galvanized ④
 ① brass ⑤
 ③ ⑥
valve seat metal on metal synthetic resin on metal
seal materials NBR FPM

details needed for main valve

- orifice
- port
- pressure regulating range
- flow rate
- media
- media temperature
- ambient temperature

details needed for proportional valve

- nominal voltage
- actuation pressure range min/max

general specifications

ports	SPB	threads G 3/8
function		stepless regulation
pressure regulation range	bar	10-200 10 - 160
Kv value	m ³ /h	max. 1.1
media		gaseous - liquid
abrasive media		
flow direction	P ⇌ R	as marked
operating time	ms	< 200
media temperature	°C	0 to +60
ambient temperature	°C	0 to +50
approvals		
mounting		
weight	kg	3.7
additional equipment		

options

electrical specifications

nominal voltage	U _B	DC 24 V (max. residual ripple 10%)
power consumption	DC	< 0,7 A
control signals	U _E	0-10 V (R _e 10KΩ)
protection	IP65	acc. DIN 40 050
energized duty rating	ED	100% (observe the connection conditions accordingly)
connection		plug with 7 contacts / wire diameter 6-8 mm

options

pneumatic specifications

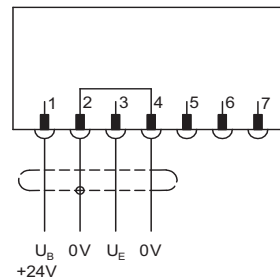
actuation pressure range	bar	see actuation pressure-diagram
air consumption		DIN ISO 8573-1 grade of compressed air quality 5/4/3
control		by 3/2-way proportional valve
actuator ports	1	G 1/8

options

⚠ The valves' technical design is based on media and application requirements. This can lead to deviations from the general specifications shown on the data sheet with regards to the design, sealing materials and characteristics.

⚠ If order or application specifications are incomplete or imprecise there exists a risk of an incorrect technical design of the valve for the required application. As a consequence, the physical and / or chemical properties of the materials or seals used, may not be suitable for the intended application.

connection plan



connection conditions

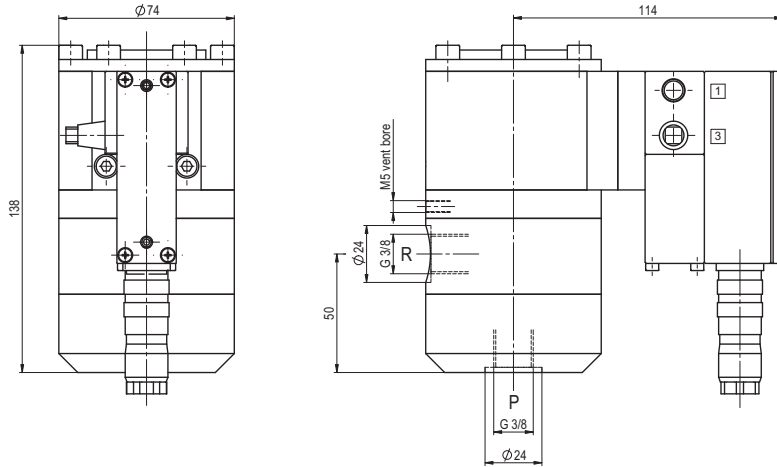
When supplying the electrical set point signal to the proportional valve, the actuating air must already be present. (see actuation pressure-diagram)

position of installation

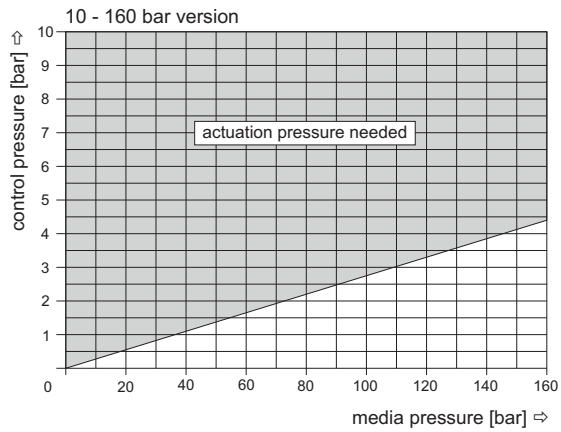
arbitrarily, but regulator not downwards

■ specifications not highlighted are standard
 ■ specifications highlighted in grey are optional

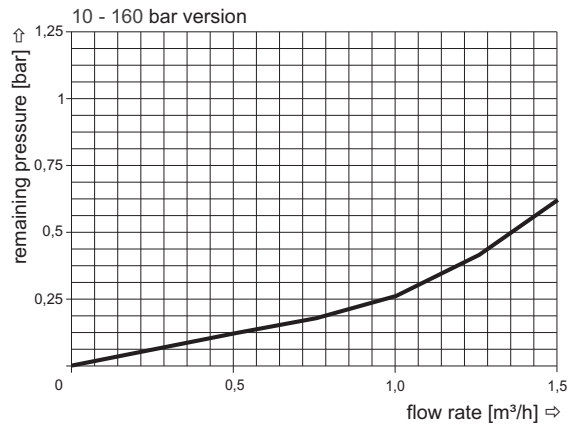
type SPB 08



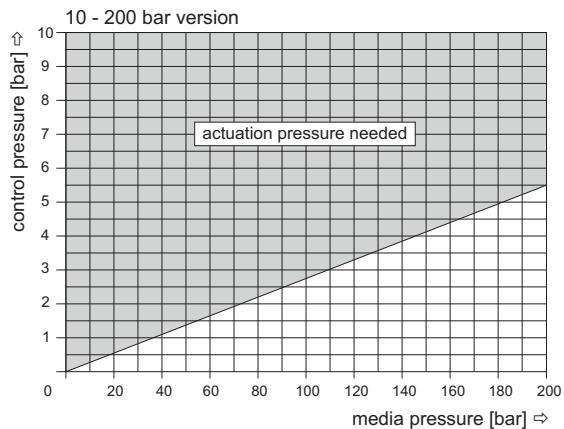
actuation pressure-diagram



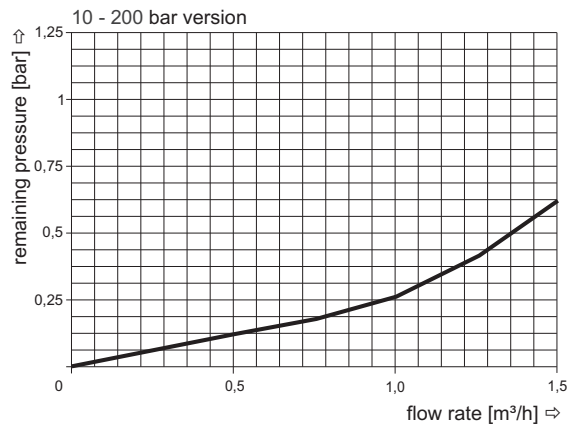
pressureless circulation mode



actuation pressure-diagram



pressureless circulation mode



The application-specific layout relating to temperature, pressure conditions, switching behavior, media and its consistency may restrict the range of use or necessitate relevant modifications to materials used and seal arrangements.

Rights reserved to make technical alterations • Not responsible for printing errors • Detailed drawings can be obtained upon request