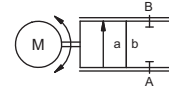



# positioning valve

## type **RMQ 32**



**control valve** electro motorically controlled  
**pressure range** PN 0-64 bar  
**orifice** DN 32 mm  
**connection** thread  
**function** stepless  
 stroke regulation



 Above stated body materials refer to the valve port connections that get in contact with the media only!


**design** direct acting with integrated 3-point-regulation  
**body materials** ① brass ④  
 ② ⑤  
 ③ ⑥ stainless steel  
**valve seat** synthetic resin on metal  
**seal materials** FPM, PTFE


**details needed**

- orifice
- port
- operating pressure/Δp
- flow rate
- media
- media temperature
- ambient temperature
- nominal voltage
- control signal

	general specifications	options
<b>ports</b>	RMQ threads G 1 1/4 - 1 1/2	
<b>function</b>	stepless regulation	
<b>pressure range</b>	bar 0-16   0-64	
<b>Kv value</b>	DN 32	
	m <sup>3</sup> /h 0-20,0	
<b>back pressure</b>	bar max. 10	
<b>media</b>	gaseous - liquid - highly viscous - contaminated	
<b>abrasive media</b>		version available
<b>flow direction</b>	A ⇨ B as marked	
<b>switching cycles</b>		
<b>operating time</b>	DN 32	
<b>closed - open</b>	sec. ca. 3,5	
<b>media temperature</b>	°C -20 to +80	
<b>ambient temperature</b>	°C max. +70	
<b>approvals</b>		WAZ
<b>mounting</b>		mounting bracket
<b>weight</b>	kg RMQ 8,6	

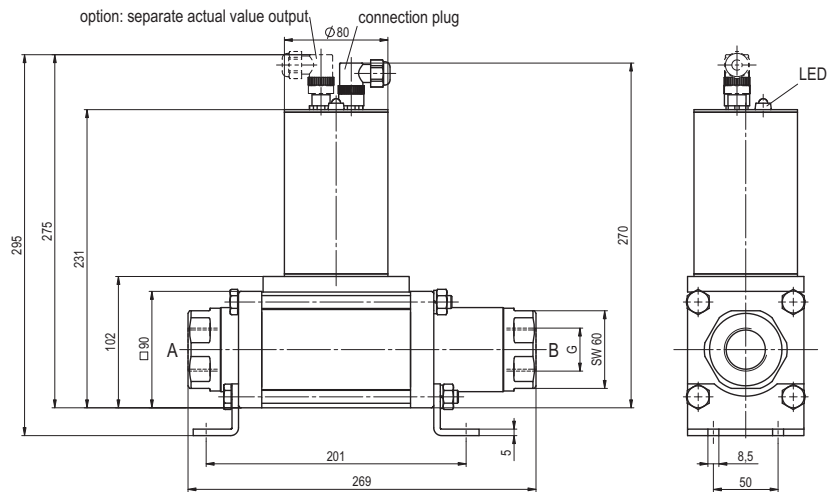
	electrical specifications	options
<b>nominal voltage</b>	U <sub>n</sub> 24 V DC	
	U <sub>n</sub> 24 V AC	
<b>power consumption</b>	DC < 0,5 A	
	AC < 0,5 A	
<b>control signals</b>	I <sub>e</sub> 0-20 mA / 4-20 mA	actual valve output
	U <sub>E</sub> 0-10 V	IA 4-20 mA
<b>protection</b>	IP 65 (P54) acc. DIN 40 050	
<b>energized duty rating</b>	ED 15%	
<b>connection</b>	M12x1 concentric socket DIN 40040, 5 poles / wire diameter 6-8 mm	
<b>additional equipment</b>	internal separate actual value output	

 The valves' technical design is based on media and application requirements. This can lead to deviations from the general specifications shown on the data sheet with regards to the design, sealing materials and characteristics.

 If order or application specifications are incomplete or imprecise there exists a risk of an incorrect technical design of the valve for the required application. As a consequence, the physical and / or chemical properties of the materials or seals used, may not be suitable for the intended application.

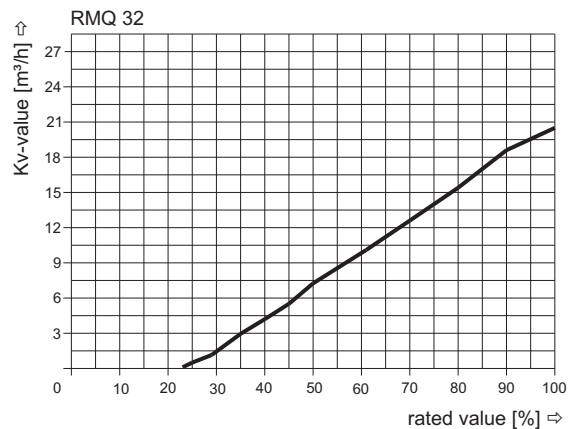
■ specifications not highlighted are standard  
 ■ specifications highlighted in grey are optional

# type RMQ 32

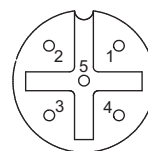


Sound creation during low pressure circulation mode and flow  $Q=14,4 \text{ m}^3/\text{h}$ : ca. 70 dbA

## kv-value

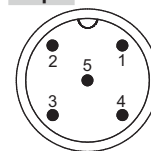


## connection plan / connection plug



- 1: nominal voltage
- 2: nominal voltage
- 3: control signal
- 4: ground (control signal)
- 5: ⊕

## option separate actual value output



- 1: actual value 4-20 mA (+)
- 2: actual value 4-20 mA (-)

The application-specific layout relating to temperature, pressure conditions, switching behavior, media and its consistency may restrict the range of use or necessitate relevant modifications to materials used and seal arrangements.

Rights reserved to make technical alterations • Not responsible for printing errors • Detailed drawings can be obtained upon request