

# lateral valve type PCD-H 10 DR

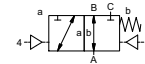
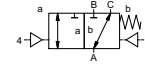
## 5-PCD-H 10 DR

valve type with pilot valve



**3/2 way valve** externally controlled  
**pressure range** PN 0-500 bar  
**orifice** DN 10 mm  
**connection** thread  
**function** valve normally closed (A ► B)  
 symbol **NC**

valve normally open (A ► B)  
 symbol **NO**



Above stated body materials refer to the valve port connections that get in contact with the media only!

**design** pressure balanced, with spring return, intersecting switch-over  
**body materials** ① brass ②  
 ③ ⑤  
 ④ ⑥ stainless steel  
**valve seat** synthetic resin on metal  
**seal materials** NBR PTFE, FPM, CR, EPDM

**details needed for main valve**

- orifice
- port
- function NC/NO
- operating pressure/Δp
- inlet pressure at A, B or C
- flow rate
- media
- media temperature
- ambient temperature
- type of actuation

**details needed for pneumatic actuation**

- nominal voltage
- type of protection
- actuation pressure range min/max
- low wattage coil, actuation pressure range 4-7 bar
- pilot valve type

The valves' technical design is based on media and application requirements. This can lead to deviations from the general specifications shown on the data sheet with regards to the design, sealing materials and characteristics.

If order or application specifications are incomplete or imprecise there exists a risk of an incorrect technical design of the valve for the required application. As a consequence, the physical and / or chemical properties of the materials or seals used, may not be suitable for the intended application.

■ specifications not highlighted are standard  
 ■ specifications highlighted in grey are optional

**general specifications**

ports	PCD-H	threads G 3/8
function	NC	NO
pressure range	bar	0-500
Kv value	m <sup>3</sup> /h	1,5
vacuum	leak rate	
pressure-vacuum	P <sub>1</sub> ↔ P <sub>2</sub>	
back pressure	P <sub>2</sub> > P <sub>1</sub>	
media	gaseous - liquid	
abrasive media		
damping	opening	
	closing	
flow direction	see pressure range	
switching cycles	1/min	130
switching time	ms	opening 30-3000 closing 30-3000
media temperature	°C	direct mounted pilot valve 60
ambient temperature	°C	direct mounted pilot valve 50
flush ports		
leak ports		
limit switches	inductive	
manual override		
approvals		
mounting		
weight	kg	9,0
additional equipment		

**options**

**electrical specifications**

nominal voltage	U <sub>n</sub>	DC 24V	special voltage upon request
	U <sub>n</sub>	AC 230V 50 Hz	special voltage upon request
power consumption	DC	4,8 W	2,5 W
	AC	pick up 11,0 VA holding 8,5 VA	
protection	IP 65 (P54)	acc. DIN 40 050	
energized duty rating	ED	100%	
connection		plug acc. DIN EN 175301-803 form B, 4 positions x 90° / wire diameter 6-8 mm	
additional equipment		illuminated plug with varistor	
optional	M12x1	connector acc. DESINA	connector acc. VDMA
max. temperature	media	60°C	
	ambient	50°C	
explosion proof	EEx m II T5	nominal voltage U <sub>n</sub>	direct current 24 V 3,25 W
		power consumption	alternating current 230 V 50 Hz 2,90 W

**options**

**pneumatic specifications**

actuation pressure range	bar	4-10
air consumption	cm <sup>3</sup> /stroke	7
cycle speed	main valve speed variable by throttles on pilot valve	
control	preferably 5/2-way pilot valve	
actuator ports	2/4	G 1/8

**options**

**hydraulic specifications**

actuation pressure range		
by media		
control		
actuator ports		

**options**

