

# lateral valve

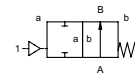
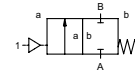
## type LVP 06

### 3-LVP 06

valve type with pilot valve



**2/2 way valve** externally controlled  
**pressure range** PN 0-500 bar  
**orifice** DN 6 mm  
**connection** thread  
**function** valve normally closed  
**symbol** **NC**  
 valve normally open  
**symbol** **NO**



**△** Above stated body materials refer to the valve port connections that get in contact with the media only!

**design** pressure balanced, with spring return  
**body materials** ① brass ②  
 ③ ⑤  
 ④ ⑥

**valve seat** monel on brass  
**seal materials** EPDM, NBR **FPM**

**details needed for main valve**

- orifice
- port
- function NC/NO
- operating pressure/Δp
- flow rate
- media
- media temperature
- ambient temperature
- type of actuation

**details needed for pneumatic actuation**

- nominal voltage
- type of protection
- actuation pressure range min/max
- low wattage coil, actuation pressure range 4-7 bar
- pilot valve type

**⚠** The valves' technical design is based on media and application requirements. This can lead to deviations from the general specifications shown on the data sheet with regards to the design, sealing materials and characteristics.

**⚠** If order or application specifications are incomplete or imprecise there exists a risk of an incorrect technical design of the valve for the required application. As a consequence, the physical and / or chemical properties of the materials or seals used, may not be suitable for the intended application.

■ specifications not highlighted are standard  
 ■ specifications highlighted in grey are optional

**general specifications**

ports	LVP	threads G 1/4
function	NC	NO
pressure range	bar	0-500
Kv value	l/min	7
vacuum	leak rate	< 10 <sup>-6</sup> mbar·l·s <sup>-1</sup>
pressure-vacuum	P <sub>1</sub> ↔ P <sub>2</sub>	pressure side max. 500 bar vacuum side leak rate upon request
back pressure	P <sub>2</sub> > P <sub>1</sub>	available (max. 16 bar)
media		gaseous
abrasive media		
damping	opening	
	closing	
flow direction	A ↔ B	as marked
switching cycles	1/min	300
switching time	ms	opening 100-3000 closing 100-3000
media temperature	°C	-40 to +80
ambient temperature	°C	-40 to +80
flush ports		
leak ports		
limit switches		inductive via adapter
manual override		by 3/2-way pilot valve
approvals		
mounting		mounting holes on valve body
weight	kg	2,2
additional equipment		adapter

**options**

**electrical specifications**

nominal voltage	
power consumption	
protection	
energized duty rating	
connection	
additional equipment	
optional	
max. temperature	
explosion proof	

**options**

**pneumatic specifications**

actuation pressure range	bar	7
air consumption	cm <sup>3</sup> /stroke	6,5
cycle speed	main valve speed variable by throttles on pilot valve	
control	by 3/2-way pilot valve	
actuator ports	2/4	M5

**options**

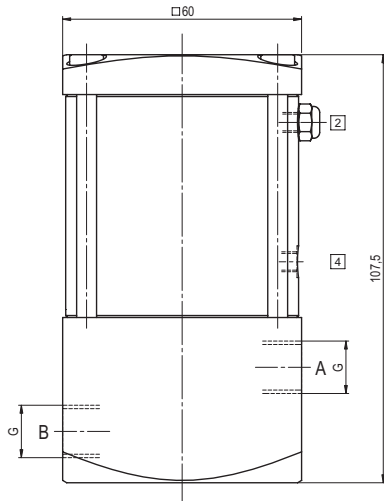
**hydraulic specifications**

actuation pressure range	
by media	
control	
actuator ports	

**options**

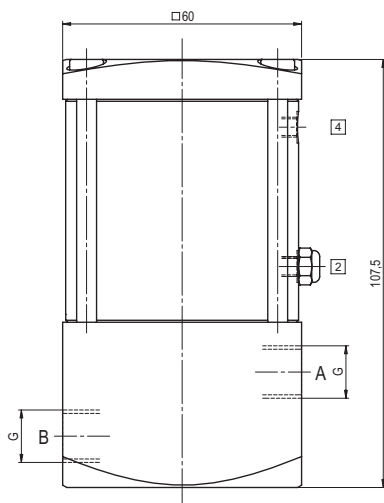
# type LVP 06

function: **NC**  
closed when not energized

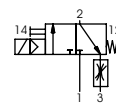


# type LVP 06

function: **NO**  
open when not energized



### pneumatic actuation (separately)



5/2-way-pilot valve  
flow rate 350 l/min  
pressure range 3-10 bar G 1/8