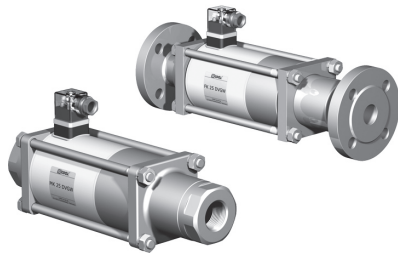
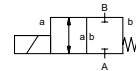


coaxial valve

type MK 25 DVGW FK 25 DVGW



2/2 way valve direct acting
pressure range PN 0-40 bar
orifice DN 25 mm
connection thread/flange
function valve normally closed
symbol NC



△ Above stated body materials refer to the valve port connections that get in contact with the media only!

design pressure balanced, with spring return
body materials Ⓣ DVGW

valve seat synthetic resin on metal
seal materials FPM, PTFE

details needed

- orifice
- port
- function NC
- operating pressure
- flow rate
- media
- media temperature
- ambient temperature
- nominal voltage

general specifications

options

| | | | |
|-----------------------------|---------------------------------|-----------------------------------|-------------------|
| ports | MK | threads G 1 - G 1 1/2 | |
| | FK | flanges PN 40 | |
| function | | NC | |
| pressure range | bar | 0-40 | |
| Kv value | m ³ /h | 11,2 | |
| vacuum | leak rate | | |
| pressure-vacuum | P ₁ ↔ P ₂ | | |
| back pressure | P ₂ > P ₁ | | |
| media | | combustible gases according G 260 | |
| abrasive media | | | |
| damping | opening | | |
| | closing | | |
| flow direction | A ↔ B | as marked | |
| switching cycles | 1/min | 130 | |
| switching time | ms | opening 130 closing 130 | |
| media temperature | °C | DC: -15 to +80 | |
| | | AC: -15 to +80 | |
| ambient temperature | °C | DC: -15 to +80 | |
| | | AC: -15 to +80 | |
| limit switches | | | inductive |
| manual override | | | available |
| approvals | DVGW | DIN 3394-1 | |
| mounting | | | mounting brackets |
| weight | kg | MK 8,0 FK 10,5 | |
| additional equipment | | | |

electrical specifications

options

| | | | | | |
|--------------------------------------|----------------|--|-----------|-------------------------------|--------------------------------|
| nominal voltage | U _n | 24 V | DC | | special voltage |
| | U _n | 230 V 40-60 Hz | AC | | special voltage |
| actuation | DC | direct-current magnet | | | |
| | AC | direct-current magnet with integrated rectifier | | | |
| insulation rating | H | 180°C | | | |
| protection | IP65 | | | | |
| energized duty rating | ED | 100% | | | |
| connection | | plug acc. DIN EN 175301-803 form A, 4 positions x 90° / wire diameter 6-8 mm | | | terminal box M16x1,5 |
| optional additional equipment | | | | | illuminated plug with varistor |
| current consumption | N-coil | | | | |
| | H-coil | 24 V | DC 2,66 A | | |
| | | 230 V 40-60 Hz | AC 0,36 A | | |
| explosion proof | E Ex e II T4 | nominal voltage U _n | V-DC | 24 48 98 110 200 220 | |
| | | nominal current I _n | A | 1,79 0,95 0,47 0,40 0,21 0,19 | |
| | | media temperature | °C | -15 to +40 | |
| | | ambient temperature | °C | -15 to +40 | |
| limit switches | | AC connection | | | with separate rectifier |
| | | inductive (I) | | | normally open-PNP |
| | | inductive (B) | | | normally open-PNP |
| | | Namur | | | circuit amplifier |

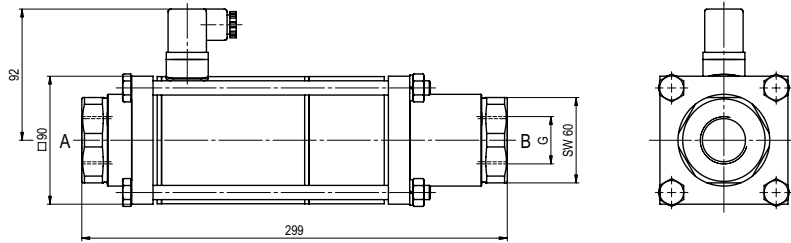
⚠ The valves' technical design is based on media and application requirements. This can lead to deviations from the general specifications shown on the data sheet with regards to the design, sealing materials and characteristics.

⚠ If order or application specifications are incomplete or imprecise there exists a risk of an incorrect technical design of the valve for the required application. As a consequence, the physical and / or chemical properties of the materials or seals used, may not be suitable for the intended application.

■ specifications not highlighted are standard
 ■ specifications highlighted in grey are optional

type MK 25 DVGW

function: **NC**
closed when not energized



type FK 25 DVGW

function: **NC**
closed when not energized

