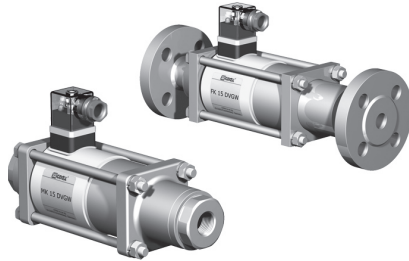
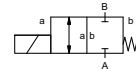


coaxial valve

type MK 15 DVGW FK 15 DVGW



2/2 way valve direct acting
pressure range PN 0-40 bar
orifice DN 15 mm
connection thread/flange
function valve normally closed
symbol NC



Above stated body materials refer to the valve port connections that get in contact with the media only!

design pressure balanced, with spring return
body materials DVGW

valve seat synthetic resin on metal
seal materials FPM, PTFE

details needed

- orifice
- port
- function NC
- operating pressure
- flow rate
- media
- media temperature
- ambient temperature
- nominal voltage

general specifications

options

| | | | |
|-----------------------------|-------------------|-----------------------------------|-------------------|
| ports | MK | threads G 3/8 - G 3/4 | |
| | FK | flanges PN 40 | |
| function | | NC | |
| pressure range | bar | 0-40 | |
| Kv value | m ³ /h | 4,8 | |
| vacuum | | leak rate | |
| pressure-vacuum | | P ₁ ↔ P ₂ | |
| back pressure | | P ₂ > P ₁ | |
| media | | combustible gases according G 260 | |
| abrasive media | | | |
| damping | opening | | |
| | closing | | |
| flow direction | A ↔ B | as marked | |
| switching cycles | 1/min | 200 | |
| switching time | ms | opening 80 closing 80 | |
| media temperature | °C | DC: -15 to +80 | |
| | | AC: -15 to +80 | |
| ambient temperature | °C | DC: -15 to +80 | |
| | | AC: -15 to +80 | |
| limit switches | | | inductive |
| manual override | | | available |
| approvals | DVGW | DIN 3394-1 | |
| mounting | | | mounting brackets |
| weight | kg | MK 3,8 FK 5,0 | |
| additional equipment | | | |

electrical specifications

options

| | | | | | |
|------------------------------|----------------|--|----------|-------------------------------|--------------------------------|
| nominal voltage | U _n | 24 V | DC | | special voltage |
| | U _n | 230 V | 40-60 Hz | AC | special voltage |
| actuation | DC | direct-current magnet | | | |
| | AC | direct-current magnet with integrated rectifier | | | |
| insulation rating | H | 180°C | | | |
| protection | IP65 | | | | |
| energized duty rating | ED | 100% | | | |
| connection | | plug acc. DIN EN 175301-803 | | | terminal box M16x1,5 |
| | | form A, 4 positions x 90° / wire diameter 6-8 mm | | | |
| optional | | | | | |
| additional equipment | | | | | illuminated plug with varistor |
| current consumption | N-coil | | | | |
| | H-coil | 24 V | DC | 2,30 A | |
| | | 230 V | 40-60 Hz | AC | 0,24 A |
| explosion proof | E Ex e II T4 | nominal voltage U _n | V-DC | 24 48 98 110 200 220 | |
| | | nominal current I _n | A | 1,20 0,60 0,30 0,28 0,15 0,14 | |
| | | media temperature | °C | -15 to +40 | |
| | | ambient temperature | °C | -15 to +40 | |
| limit switches | | AC connection | | | with separate rectifier |
| | | inductive (I) | | | normally open-PNP |
| | | inductive (B) | | | normally open-PNP |
| | | Namur | | | circuit amplifier |

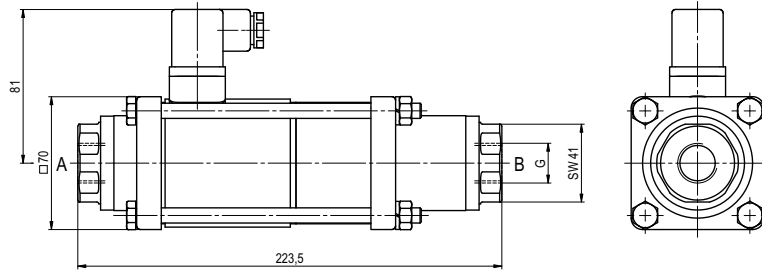
The valves' technical design is based on media and application requirements. This can lead to deviations from the general specifications shown on the data sheet with regards to the design, sealing materials and characteristics.

If order or application specifications are incomplete or imprecise there exists a risk of an incorrect technical design of the valve for the required application. As a consequence, the physical and / or chemical properties of the materials or seals used, may not be suitable for the intended application.

■ specifications not highlighted are standard
 ■ specifications highlighted in grey are optional

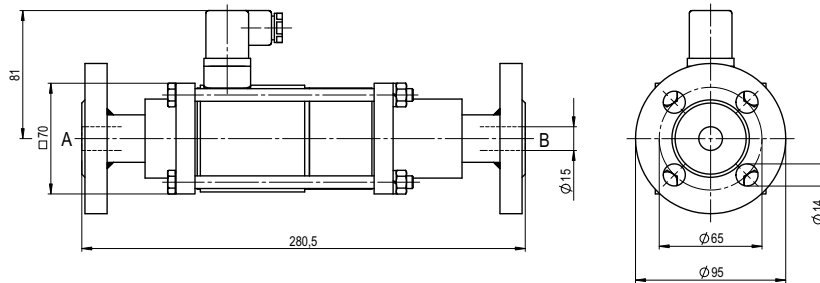
type MK 15 DVGW

function: **NC**
closed when not energized



type FK 15 DVGW

function: **NC**
closed when not energized



The application-specific layout relating to temperature, pressure conditions, switching behavior, media and its consistency may restrict the range of use or necessitate relevant modifications to materials used and seal arrangements.

Rights reserved to make technical alterations • Not responsible for printing errors • Detailed drawings can be obtained upon request