

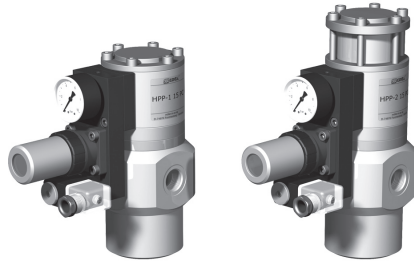
pressure reduction valve

type **HPP-1 15 PC**
HPP-2 15 PC

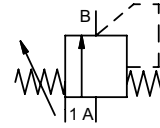
3-HPP-1 15 PC

3-HPP-2 15 PC

valve type with pilot valve



control valve manual externally controlled
pressure range PN 0-80 bar
orifice DN 15 mm
connection thread/cartridge
function manual stepless pressure regulation



Above stated body materials refer to the valve port connections that get in contact with the media only!

design externally controlled with spring return
body materials ① aluminium ③
① brass ④
② ⑥ stainless steel
valve seat synthetic resin on metal / metal on metal
seal materials EPDM, PU, HNBR FPM

details needed for main valve

- orifice
- port
- pressure regulating range
- flow rate
- media
- media temperature
- ambient temperature

details needed for pneumatic actuation

- nominal voltage
- type of protection
- actuation pressure range min/max

	ports	HPP-1	with valve body G 1/2 - G 3/4	HPP-2	with valve body G 1/2 - G 3/4	options
function			stepless regulation			without valve body
pressure regulation range	bar	HPP-1 5-40		HPP-2 5-80		without valve body
Kv value	m³/h	max. 6,0				
media		gaseous - liquid - highly viscous - contaminated				
abrasive media						version available
flow direction	A ⇌ B	as marked				
operating time	ms	< 200				
media temperature	°C	0 to +60				
ambient temperature	°C	0 to +50				
approvals						WAZ
mounting						mounting holes
weight	kg	HPP-1 2,7	HPP-2 3,0			HPP-1 3,8 HPP-2 4,1

electrical specifications

	nominal voltage	U _n	24 V DC	230 V 50 Hz AC	options
power consumption	DC	4,8 W			special voltage upon request
	AC	pick up 11,0 VA holding 8,5 VA			special voltage upon request
protection	IP 65 (P54)	acc. DIN 40 050			
energized duty rating	ED	100%			
connection		plug acc. DIN EN 175301-803 form B			
additional equipment		illuminated plug with varistor			
optional	M12x1	connector acc. DESINA		connector acc. VDMA	
coil		3 positions x 90° / wire diameter 6-8 mm			
max. temperature	media	60°C			
	ambient	50°C			
explosion proof	EEx m II T5	nominal voltage U _n	direct current 24 V	3,25 W	
		power consumption	alternating current 230 V 50 Hz	2,90 W	

pneumatic specifications

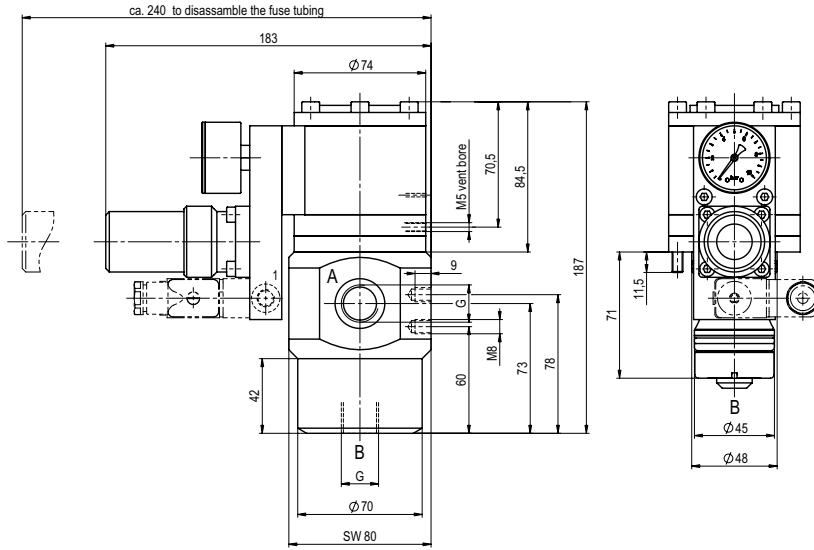
	actuation pressure range	bar	see actuation pressure-diagram	options
air consumption			DIN ISO 8573-1 grade of compressed air quality 5/4/3	
control			preferably 3/2-way pilot valve during low pressure circulation mode	
actuator ports		1	G 1/8	

The valves' technical design is based on media and application requirements. This can lead to deviations from the general specifications shown on the data sheet with regards to the design, sealing materials and characteristics.

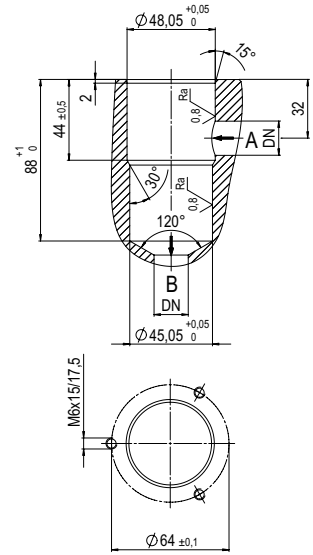
If order or application specifications are incomplete or imprecise there exists a risk of an incorrect technical design of the valve for the required application. As a consequence, the physical and / or chemical properties of the materials or seals used, may not be suitable for the intended application.

■ specifications not highlighted are standard
■ specifications highlighted in grey are optional

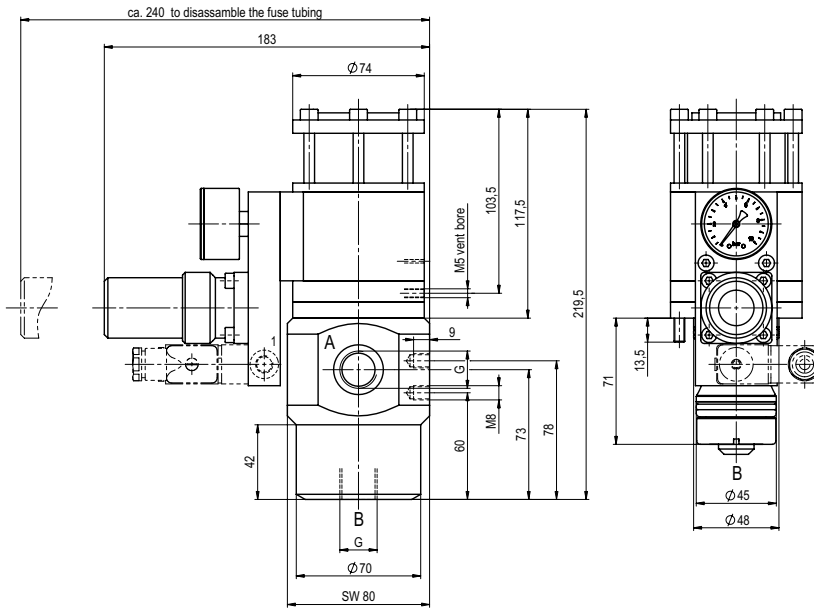
type HPP-1 15 PC



drilling design for cartridge



type HPP-2 15 PC



actuation pressure-diagram

