

pressure limitation valve

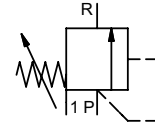
type HPB 08

3-HPB 08

valve type with pilot valve



control valve manuel externally controlled
pressure range PN 0-200 bar
orifice DN 8 mm
connection thread
function manual stepless pressure regulation



Above stated body materials refer to the valve port connections that get in contact with the media only!

design externally controlled without spring return
body materials ② steel, galvanized ④
 ① brass ⑤
 ③ ⑥
valve seat metal on metal synthetic resin on metal
seal materials NBR FPM

details needed for main valve

- orifice
- port
- pressure regulating range
- flow rate
- media
- media temperature
- ambient temperature

details needed for pneumatic actuation

- nominal voltage
- type of protection
- actuation pressure range min/max

	general specifications	options
ports	HPB threads G 3/8	
function	stepless regulation	
pressure regulation range	bar 10-200	
Kv value	m ³ /h max. 1.1	
media	gaseous - liquid	
abrasive media		
flow direction	P ⇌ R as marked	
operating time	ms < 200	
media temperature	°C 0 to +60	
ambient temperature	°C 0 to +50	
approvals		
mounting		
weight	kg 3,6	
additional equipment		

electrical specifications

	electrical specifications	options
nominal voltage	U _n 24 V DC	special voltage upon request
	U _n 230 V 50 Hz AC	special voltage upon request
power consumption	DC 4,8 W	2,5 W
	AC pick up 11,0 VA holding 8,5 VA	
protection	IP 65 (P54) acc. DIN 40 050	
energized duty rating	ED 100%	
connection	plug acc. DIN EN 175301-803 form B	
additional equipment	illuminated plug with varistor	
optional	M12x1 connector acc. DESINA	connector acc. VDMA
coil	3 positions x 90° / wire diameter 6-8 mm	
max. temperature	media 60°C	
	ambient 50°C	
explosion proof	EEx m II T5	nominal voltage U _n direct current 24 V 3,25 W
		power consumption alternating current 230 V 50 Hz 2,90 W

pneumatic specifications

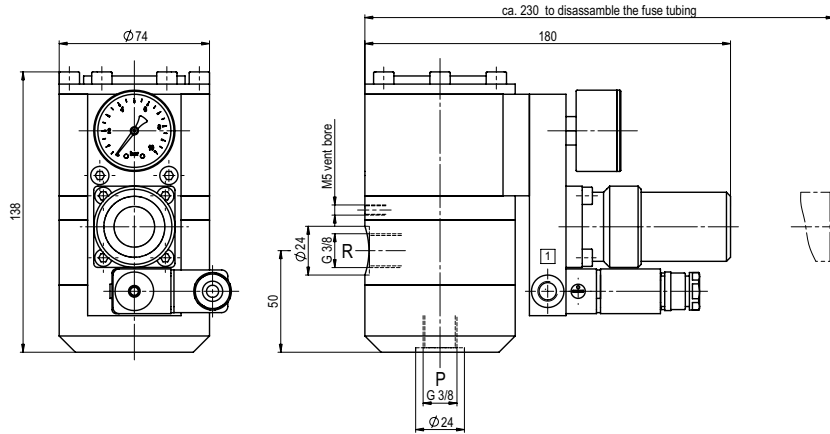
	options
actuation pressure range	bar see actuation pressure-diagram
air consumption	DIN ISO 8573-1 grade of compressed air quality 5/4/3
control	preferably 3/2-way pilot valve during low pressure circulation mode
actuator ports	1 G 1/8

The valves' technical design is based on media and application requirements. This can lead to deviations from the general specifications shown on the data sheet with regards to the design, sealing materials and characteristics.

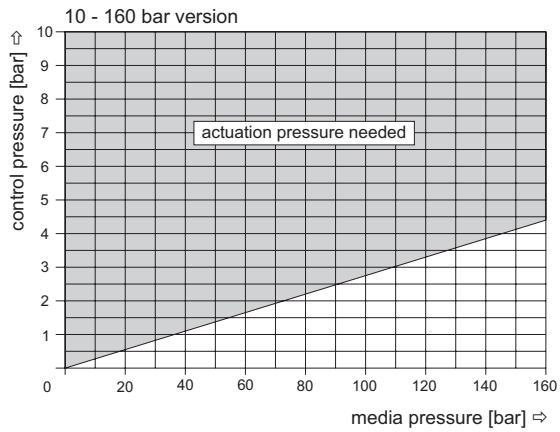
If order or application specifications are incomplete or imprecise there exists a risk of an incorrect technical design of the valve for the required application. As a consequence, the physical and / or chemical properties of the materials or seals used, may not be suitable for the intended application.

■ specifications not highlighted are standard
 ■ specifications highlighted in grey are optional

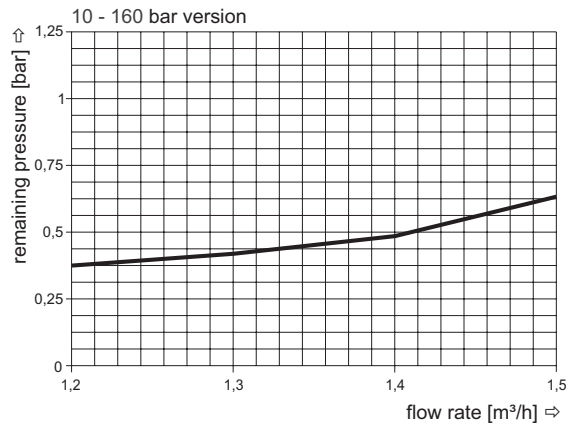
type 3-HPB 08



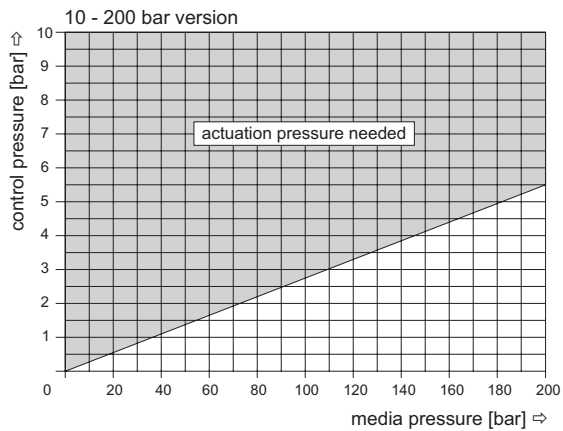
actuation pressure-diagram



pressureless circulation mode



actuation pressure-diagram



pressureless circulation mode

